

LA REINA

2017 - 2018 PROFILE

HIGH SCHOOL & MIDDLE SCHOOL
A Catholic College Preparatory School for Young Women



Head of School
Mr. Tony Guevara

Assistant Head of School
Ms. Anne Coffey Rog, M. Ed.

Director of Guidance
Mrs. Mindy Hobmann

College Counselor
Mrs. Nicole Twohig

Registrar
Mrs. Lisa Pino

School Address
106 West Janss Road
Thousand Oaks, CA 91360
(805) 495-6494
Fax (805) 494-4966

Website
www.lareina.com

MISSION STATEMENT La Reina High School & Middle School is a Catholic college preparatory school for young women in the tradition, vision, and educational principles of the Sisters of Notre Dame. La Reina provides a nurturing, Catholic environment of educational excellence, focused on helping young women develop into moral and self-confident leaders, who work for the transformation of individuals and society. Students are given opportunities to foster their relationship with God, to grow intellectually, to develop their individual gifts, and to be catalysts for the promotion of justice locally, nationally and globally.

GENERAL INFORMATION Established in 1964, La Reina High School & Middle School is a private Catholic college preparatory school for girls in grades 6 through 12. The school is sponsored by the Sisters of Notre Dame. It is fully accredited by the Western Association of Schools and Colleges and the Western Catholic Education Association. Current enrollment is 422 students with an average class size of 25. Admission of students is highly selective.

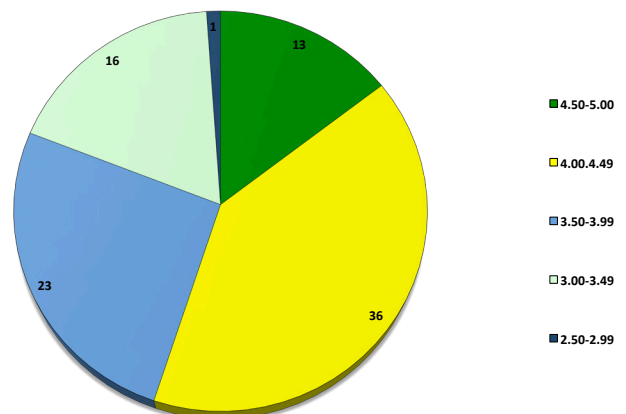
GRADUATION REQUIREMENTS La Reina offers a comprehensive, college preparatory program with graduation requirements that reflect the standards for admission to the University of California. Students earn five credits for each semester of study. The required number of credits in each department are given below:

English	40	Mathematics	30	Speech	5
Religion	40	Science	30	Academic Computer Skills	5
Electives	30	Visual and Performing Arts	10	Physical Education	10
Social Studies	30	World Languages	20		

HONORS DIPLOMA REQUIREMENTS In addition to completing the required courses for graduation, students must have a minimum 3.75 unweighted GPA and take at least twelve Honors and AP courses at La Reina. Only courses at La Reina are considered for an honors diploma. Transfer students' high school courses will be considered for the honors diploma on an individual basis.

GRADING SYSTEM La Reina's grade point average is weighted for honors and AP courses. Students are not ranked.

Grade	Grade-Points	Weighted Grade
A	4.0	5.0
B	3.0	4.0
C	2.0	3.0
D	1.0	2.0
F	0.0	-----

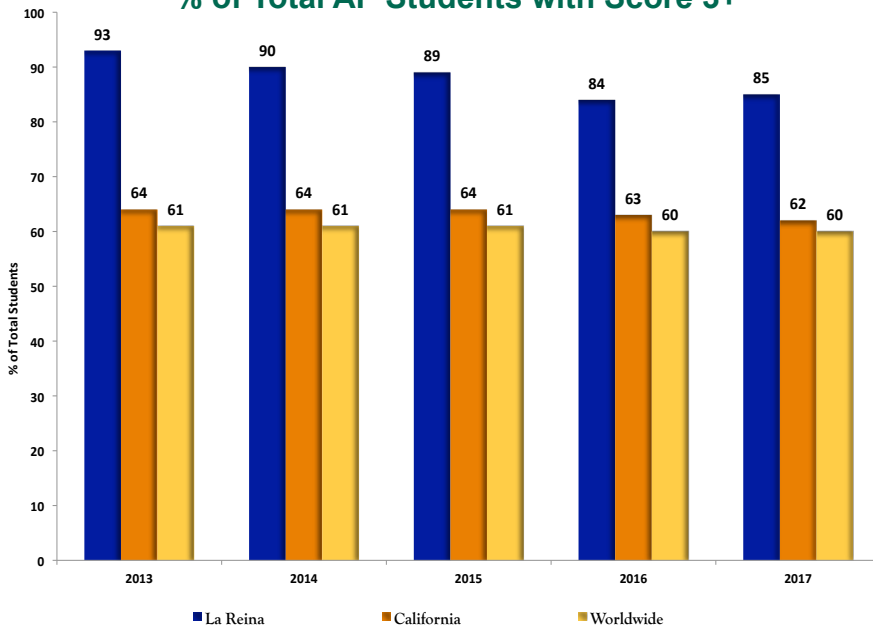


GRADE DISTRIBUTION
of the Class of 2017



AP Five-Year School Score Summary 2013 - 2017

% of Total AP Students with Score 3+



SCHOLASTIC APTITUDE TEST MEAN SCORES FOR THE CLASS OF 2018

ERW	La Reina High School	646
	National	539
MATH	La Reina High School	623
	National	535

College Board Honors

- 89 students are in the Class of 2018.
- La Reina offers 18 AP courses and 10 Honors courses.
- All La Reina students enrolled in AP courses are required to take the test.
- In 2017, 73% of students in grades 10 through 12 took AP tests.
- 85% passed one or more APs.
- 87% earned a score of 4 or 5.
- La Reina has 31 AP scholars, 27 AP Scholars with Honor, 35 AP Scholars with Distinction, and 5 National AP Scholars.
- One student in the Class of 2017 received a scholarship through the National Merit Scholarship program.
- One student in the Class of 2018 is a National Merit Semifinalist.
- La Reina students' mean SAT score is 195 points above the national average.

COLLEGE ACCEPTANCES CLASS OF 2017

Academy of Art University
 Adelphi University
 Albion College
 American University
 Arizona State University
 Art Center College of Design
 Auburn University
 Augustana College
 Azusa Pacific University
 Babson College
 Baldwin Wallace University
 Ball State University
 Bard College
 Baylor University
 Belmont University
 Beloit College
 Biola University
 Boise State University
 Boston College
 Boston University
 Brandeis University
 Bryn Mawr College
 Butler University
 California Baptist University
 California Lutheran University
 California Polytechnic State University, San Luis Obispo
 California State University, Channel Islands
 California State University, Chico
 California State University, Fullerton
 California State University, Long Beach
 California State University, Monterey Bay
 California State University, Northridge
 California State University, Sacramento
 California State University, San Marcos
 Central Washington University
 Chapman University
 College of Charleston
 College of the Holy Cross
 College of William and Mary
 Colorado State University
 Concordia University - Irvine
 Concordia University - Portland

Cornish College of the Arts
 Creighton University
 Dominican University of California
 Dominican University of California
 Earlham College
 Elon University
 Embry-Riddle Aeronautical University, Prescott
 Emory University
 Fairfield University
 Fordham University
 Georgia State University
 Gonzaga University
 Grand Canyon University
 Hamilton College - NY
 Hawaii Pacific University
 Hiram College
 Hofstra University
 Holy Names University
 Humboldt State University
 Indiana University at Bloomington
 Johnson & Wales University
 Juniata College
 King's College
 King's College London
 Lehigh University
 Lewis & Clark College
 Liberty University
 Louisiana State University
 Loyola Marymount University
 Loyola University Chicago
 Loyola University New Orleans
 Manhattan College
 Mercyhurst University
 Miami University, Oxford
 Michigan State University
 Monmouth College
 Montana State University, Bozeman
 Montclair State University
 Moorpark College
 Mount Holyoke College
 Mount Saint Mary's University
 Muhlenberg College

New York University - Tisch School of the Arts
 North Carolina State University
 Northeastern University
 Northern Arizona University
 Ohio Wesleyan University
 Oregon State University
 Otterbein University
 Pace University, New York City
 Pennsylvania State University
 Point Loma Nazarene University
 Point Park University
 Portland State University
 Providence College
 Purdue University
 Regis University
 Rider University
 Ringling College of Art and Design
 Rocky Mountain College
 Rollins College
 Saint Joseph's University
 Saint Louis University
 Saint Martin's University
 Saint Mary's College of California
 San Diego State University
 San Francisco State University
 San Jose State University
 Santa Barbara City College
 Santa Clara University
 Scripps College
 Seattle Pacific University
 Seattle University
 Seton Hall University
 Siena College
 Simmons College
 Smith College
 Sonoma State University
 Southern Methodist University
 Southern Methodist University (College of Humanities & Sciences)
 Stevens Institute of Technology
 Suffolk University
 Syracuse University

Texas A&M University
 Texas Christian University
 Texas State University
 The George Washington University
 The Ohio State University
 The University of Alabama
 The University of Arizona
 The University of Findlay
 The University of Georgia
 The University of Iowa
 The University of North Carolina at Chapel Hill
 The University of Oklahoma
 The University of Tampa
 The University of Texas, Dallas
 Tulane University
 Universidad del Sagrado Corazon
 University of Arkansas
 University of California, Berkeley
 University of California, Davis
 University of California, Irvine
 University of California, Los Angeles
 University of California, Merced
 University of California, Riverside
 University of California, San Diego
 University of California, Santa Barbara
 University of California, Santa Cruz
 University of Central Florida
 University of Colorado at Boulder
 University of Colorado at Denver
 University of Colorado Colorado Springs
 University of Connecticut
 University of Dayton
 University of Denver
 University of Essex
 University of Glasgow
 University of Hawaii at Hilo
 University of Hawaii at Manoa
 University of Kansas
 University of Maine
 University of Massachusetts, Amherst
 University of Massachusetts, Boston
 University of Miami

University of Michigan
 University of Minnesota, Twin Cities
 University of Mississippi
 University of Missouri Columbia
 University of Nebraska at Lincoln
 University of Nevada, Reno
 University of New Hampshire at Durham
 University of New Haven
 University of New Mexico
 University of Oregon
 University of Pennsylvania
 University of Pittsburgh
 University of Portland
 University of Puget Sound
 University of Redlands
 University of Rochester
 University of San Diego
 University of San Francisco
 University of South Carolina
 University of Southern California
 University of St. Thomas
 University of Tennessee, Knoxville
 University of the Pacific
 University of Utah
 University of Virginia
 University of Washington
 University of Wisconsin, Madison
 Villanova University
 Virginia Commonwealth University
 Wagner College
 Wake Forest University
 Washington State University
 Washington University in St. Louis
 Webster University
 Western Washington University
 Westminster Choir College
 Westmont College
 Whitman College
 Whittier College
 Worcester Polytechnic Institute
 Xavier University
 Yale University
 Youngstown State University